



Wireless

data sheet

RLED30BOOST

BOOST UNIT FOR USE WITH RLED30CV4+ MODULES



WHAT IS IT ?

A PWM repeater module for use with RLED30CV4+ units. The RLED30BOOST allows the length of tape from an RLED30CV4+ to be extended where long runs of 3 or 4 colour LED constant voltage tape are required.

The RLED30BOOST requires its own power supply but does not require addressing or any other programming.

RLED30BOOST for installations with longer runs of 3 or 4 colour LED tape.



EXTENDED CONTROL

The RLED30BOOST is designed to work with RLED30CV4+ modules where the length of tape exceeds the capacity of the RLED30CV4+. The RLED30BOOST is fed the output signal from the RLED30CV4+ and allows a further length of tape to be controlled from the same base RLED30CV4+ unit. This method of installation is more cost effective than having multiple RLED30CV4+ units but importantly allows colour cycling to remain in sync where multiple RLED30CV4+ units may drift due to slight differences in the internal clocks.

The RLED30BOOST does not require addressing or any other form of programming.

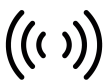
Maximum number of RLED30BOOSTs per RLED30CV4+ – 10.

Each RLED30BOOST can control 30W per channel @ 12V or 60W per channel @ 24V.

For more information:

[Rako Overview Application Sheet](#)

[Wireless Module Application Sheet](#)



Wireless



data sheet

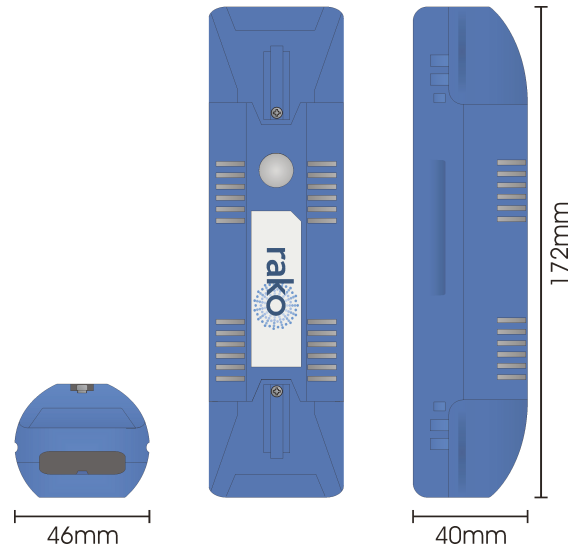
RLED30BOOST

BOOST UNIT FOR USE WITH RLED30CV4+ MODULES

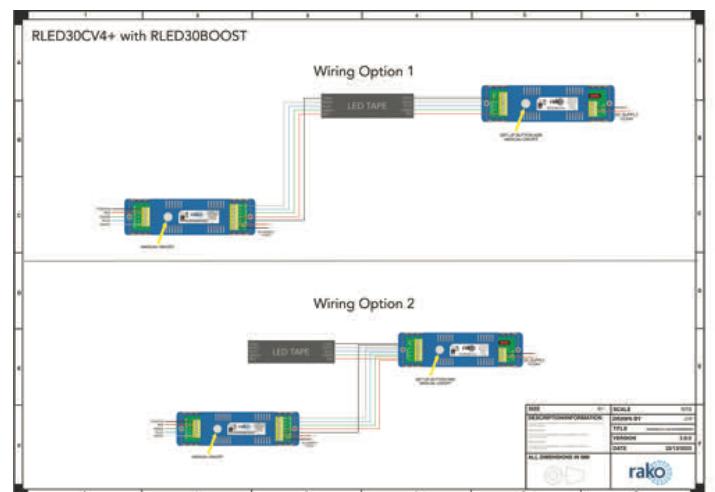
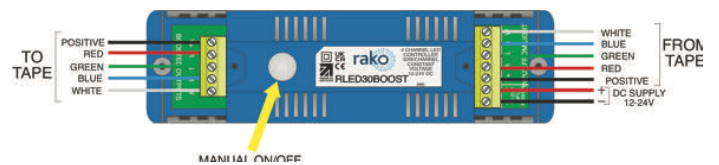
technical data

dimensions	172x46x40mm
input supply	12 or 24v DC
weight	159g
housing	UL V0 material
climate range	Temperature +2C to +40C Humidity +5% to 95% non condensing
connections	2 way screw terminal for 12/24v power. 5 way screw terminals for input 5 way screw terminals for output
protection	Reverse polarity input protection. Output current limit protection.
load types	4 channel constant voltage LED fittings
minimum load	1W
maximum load	12v DC 3 channel @90W 12v DC 4 channel @120W 24v DC 3 channel @180W 24v DC 4 channel @240W
terminal sizes	4mm ²
standards	Emissions - EN61000-6-3 : 2007 Immunity - EN61000-6-1 : 2007
communication	433.9MHz coded FM radio
memory	Flash memory (non-volatile)

mechanical data



wiring schematic



telephone +44 (0) 1634 226666 www.rakocontrols.com

WE RESERVE THE RIGHT TO CHANGE THE SPECIFICATION AND DATA HERewith WITHOUT NOTICE.
© 2024 RAKO CONTROLS LIMITED

V.1.1.0